

JEAN FAUCHEUR

Profile:

- French sculptor. His artistic work revolves around the human figure and its deconstruction.
- Original, disconcerting and powerful works. Interplay of blank and filled-in areas.
- For Daum: 2 disturbing fantasy sculptures. Two busts which take us into an imaginary, unreal world.

Biography (1956)



Born in 1956 in Paris, **Jean Faucheur is a graduate of the Ecole Nationale Supérieure des Arts Décoratifs in Paris and a prize-winner of the Villa Medici "Extramural" prize in New York.**

Considering sculpture as a mature art, he started practising it in 1991. It was a vital change of direction in his thinking and artistic career. A participant of the International Contemporary Art Fair as from 1993, he made the human figure and its deconstruction the central focus of his work and developed a delicate, ironic and powerful style of art.

His first sculptures were in terracotta with cut-away sections revealing texts. Subsequently there came a change in this approach, whereby the texts were replaced with empty spaces. This new expression then enabled the eyes of the viewer to enter into the subtlety of the sculpture while entirely occupying it.

Jean Faucheur for Daum



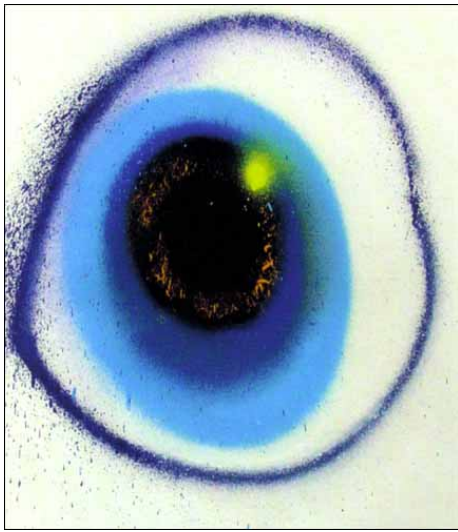
For Jean Faucheur, “pâte de cristal” transcends sculpture and gives it a particular dimension through the play on light. In 2002, the artist chose to sculpt a piece for Daum edited in 375 copies, representing the bust of a child, symbol of innocence, purity and spontaneity. In penetrating its **"Rêves"** (dreams) through this lacework of pate de verre, viewers can participate in their own way in the dreamlike journey represented by encountering one's subconscious. The material, reduced to the essential, conveys a strong feeling of mingled tenderness, lightness and mystery. Height: 30.5 cm

In 2004 Jean Faucheur created **"Masque de verre"** (Glass mask), a piece edited in 275 copies, which makes play with mass and space. The path is that of the undulating, moving form that goes from top to bottom and bottom to top, thus outlining a face and the line of a body. This sculpture inspired by the beloved woman remains a representation, inviting the viewer into the form's inner world. The movement, like a wave in volcanic rock or a stream frozen by a sudden frost, oscillates between immobility and imperceptible movement.

Height: 41 cm



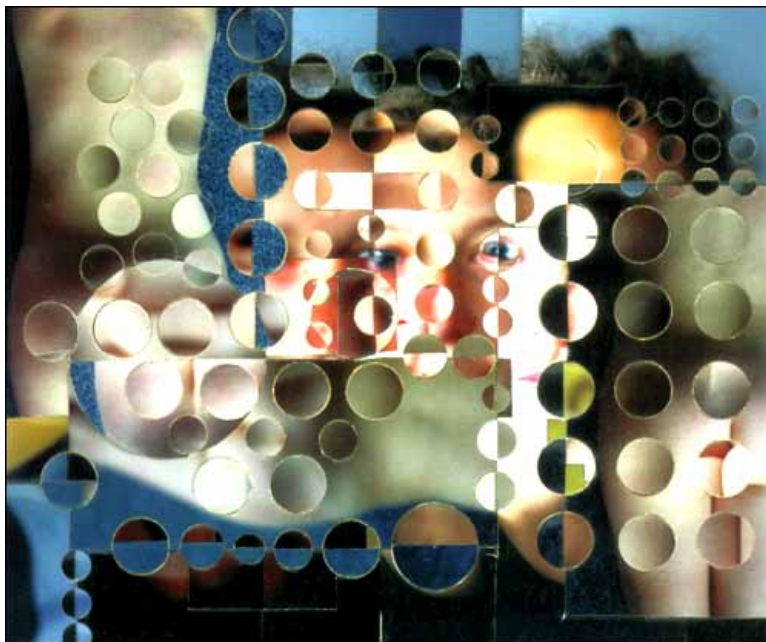
The world of Jean Faucheur



Aerosol on paper
Date created: 2004
Size: 60 cm x 45 cm



Charlie – Photo cut-outs
Date created: 1998
Size: 13 cm x 18 cm



Amélie – Photo cut-outs
Date created: 2000
Size: 20 cm x 28 cm