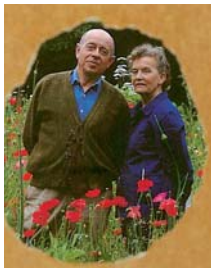


CLAUDE LALANNE

Profile:

- The Lalanne's: internationally recognised artists.
- Limitless imagination, a real antidote to a bad mood.
- A universe which conveys the charm of the Garden of Eden.
- "Diva": a simple, delicate, poetic sculpture.

Biography



Claude and François-Xavier Lalanne have worked together since 1956. Their first sculpture exhibition took place at the Galerie J. in Paris in 1964. They then exhibited in the Alexandre Iolas gallery from 1965 until it closed in 1979. They worked with the Daniel Templon Gallery from 1983 to 1987 and since 1987 with the Marisa del Re gallery in New York. The Lalannes have created many editions with Artcurial since 1978, in particular, the jewellery designed by Claude Lalanne. Since 1990, the JGM has regularly exhibited their sculptures both in Paris and abroad. The Guy Pieters gallery in Belgium represents them in Northern Europe. Like a diva, Claude Lalanne has worked hard and uncomplainingly, concentrating on a single result, knowing full well that the real interest of a work owes nothing to the outward show of effort devoted to it. The culminating point of this contradiction is thus crystallised at the moment the public acclaim it.

Claude Lalanne for Daum



The artist revealed herself as more of a storyteller than an animal sculptor when she offered this "Diva" (edited in 125 copies) to Daum: a mouse giving a show at the very instant when the artist looks through the theatre curtain. The spotlight is thus on this opaque barrier between the front and back of the stage. It is what is known as the "other side of the picture." Paradoxically, the artist wished to make this very dark barrier transparent, as though a shared light could one day light up the two incompatible realities. An atmosphere is created whereby the diaphanous light caressing the surfaces gives the decor an unreal effect in the sculpture. The little mouse pokes her head through the curtain symbolised by the fan. Like a diva proud of her performance, transfigured by the

muted brilliance of the milky crystal, she contemplates her public in an attitude that is half rebellious, half-feverish.

The sculpture is a self-portrait.

Height: 22.5 cm

The world of Claude Lalanne



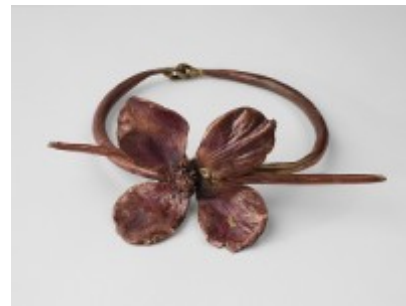
Coeur de Marie (Marie-Hélène)

Gold
Diameter: 11 cm
Length: 24 cm

8 copies

Necklace with Flower Series

Diameter: 12 cm.
Flower diameter: 7.5 cm
8 unique pieces



Claude and Francois-Xavier Lalanne

Tins of sardines
Creation 1970 - 1979
Size: 140 cm x 192 cm x 33 cm.

Claude and Francois-Xavier Lalanne

Rare table in the form of a bird
Height: 70 cm
Length: 160 cm
Diameter: 140 cm

